



HIGHPOINT CENTER

106 EAST COLLEGE AVENUE



James L. Nystrom, SIOR
+1 850 224 2300 | nystrom@talcor.com

HIGHPOINT CENTER

PROPERTY

Highpoint Center, located at 106 East College Avenue, is one of Tallahassee's premier office buildings. This Class "A" office building has up to 83,376 SF of rentable office space. Highpoint Center has on-site property management and secure after-hour and weekend access card entrance. This building is convenient located in the heart of downtown Tallahassee in close proximity to the Capitol and FSU.

TALLAHASSEE AREA INFORMATION

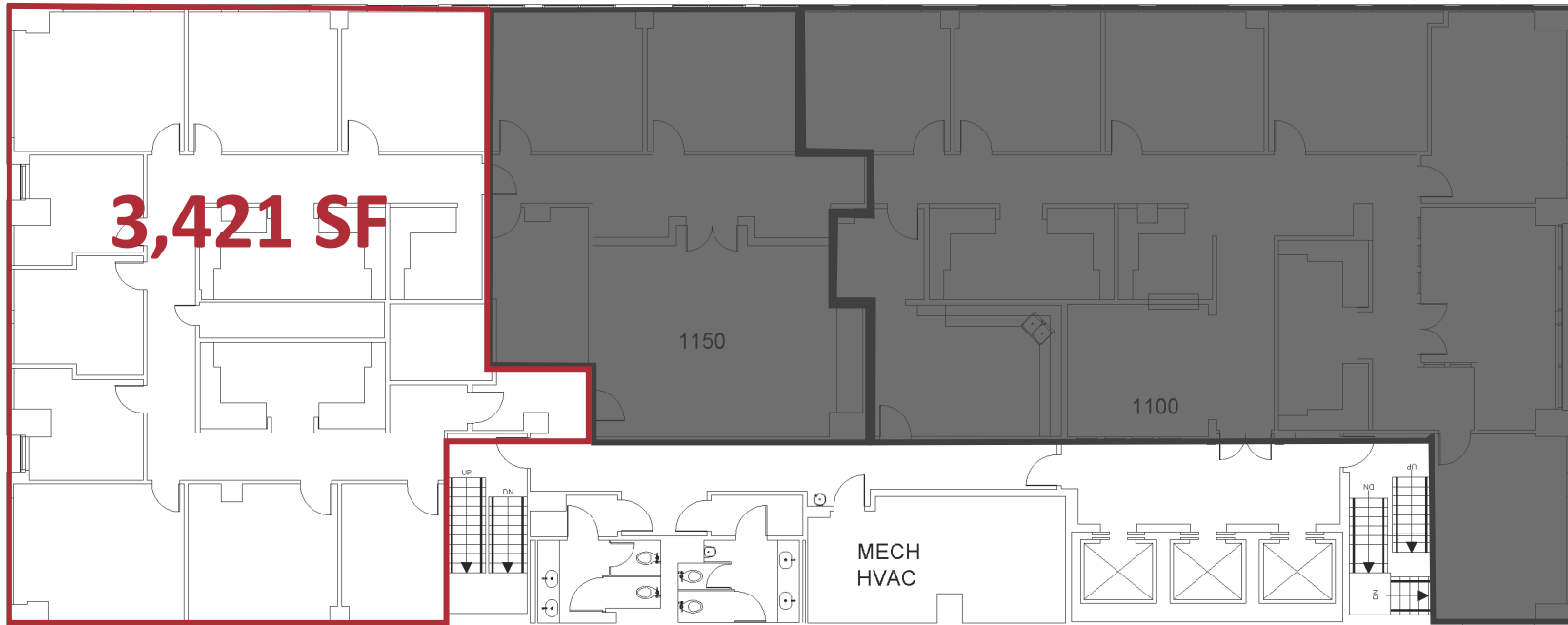
Tallahassee is known as Florida's Capital City and Downtown Tallahassee is the political epicenter drawing in visitors from around the state and nation to visit the Capitol. In addition, the city is known for its college population from Florida State University (42,000 student enrollment), Tallahassee Community College (18,000 students), and Florida A&M University (9,000 student enrollment). The heart of the Capital City is Downtown Tallahassee. Downtown Tallahassee is known for its beautiful parks, boutique hotels, unique and exciting dining, museums, arts, music and natural resources. So regardless of what brought you here, being here will guarantee you an experience vibrant with entertainment, culture and delight.

- 3,421 – 9,411 rentable SQFT available
- 1 top floor available
- Steps from the capitol
- Full floor available from 9,411 SQFT
- Private elevator to the top floor
- On-site parking





PROPERTY SUMMARY



11th Floor +/- 3,421 SF Rentable Area

- 9 Perimeter Offices
- 4 Work-stations

American Building
Calculations

23110 State Road 54
Suite 252
Lutz, FL 33549
813-600-5472
www.abcalc.biz



Client:
106 E College Ave
Suite M
Tallahassee, FL 32301
850.222.1642

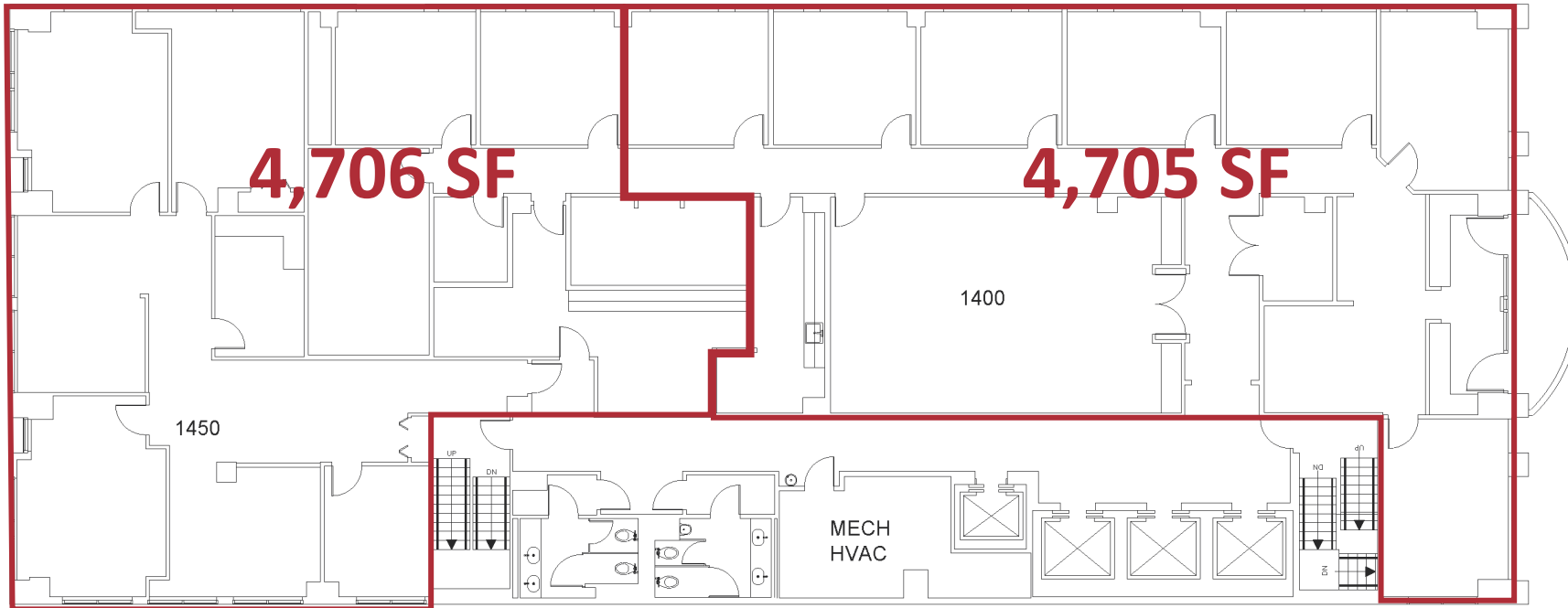
Property:
Highpoint Center
106 E College Ave
Tallahassee, FL 32301

This is an unpublished existing condition measurement / as-built floor plan document created by American Building Calculations, Inc. Any site plans are outlines only and are not to be considered valid engineering drawings. This document has been created based on the contract for this project agreed upon between the owner and American Building Calculations, Inc. Any publication, copying, distribution or exhibiting of this document with attributes identifying American Building Calculations, Inc. is not permitted in any fashion without the written permission of American Building Calculations, Inc.

Field Drawn By:	JM
Drawn By:	JM
Published Date:	06/19/19
Revision Date:	N/A

Scale:

PROPERTY SUMMARY



14th Floor +/- 9,411 SF Rentable Area

- 15 Perimeter Offices
- 1 Large Conference Room
- 1 Kitchen

American Building
Calculations

23110 State Road 54
Suite 252
Lutz, FL 33549
813-600-5472
www.abcalc.biz



Client:
106 E College Ave
Suite M
Tallahassee, FL 32301
850.222.1642

Property:
Highpoint Center
106 E College Ave
Tallahassee, FL 32301

This is an unpublished existing condition measurement / as-built floor plan document created by American Building Calculations, Inc. Any site plans are outlines only and are not to be considered valid engineering drawings. This document has been created based on the contract for this project agreed upon between the owner and American Building Calculations, Inc. Any publication, copying, distribution or exhibiting of this document with attributes identifying American Building Calculations, Inc. is not permitted in any fashion without the written permission of American Building Calculations, Inc.

Field Drawn By:	JM
Drawn By:	JM
Published Date:	06/19/19
Revision Date:	N/A

Scale:





NAITALCOR



James (Jimmy) L. Nystrom, SIOR

Commercial Advisor

NAI TALCOR

o: 850.224.2300

f: 850.425.1114

c: 850.570.5837

nystom@talcor.com

NAI TALCOR

1018 Thomasville Road, Suite 200A

Tallahassee, Florida 32303

+1 850 224 2300

TALCOR.COM

©2018 NAI TALCOR

The contents of this proposal are intended for the individuals to whom it is presented or delivered and their company associates. Any dissemination or replication, without the express authorization of NAI TALCOR, is strictly prohibited.